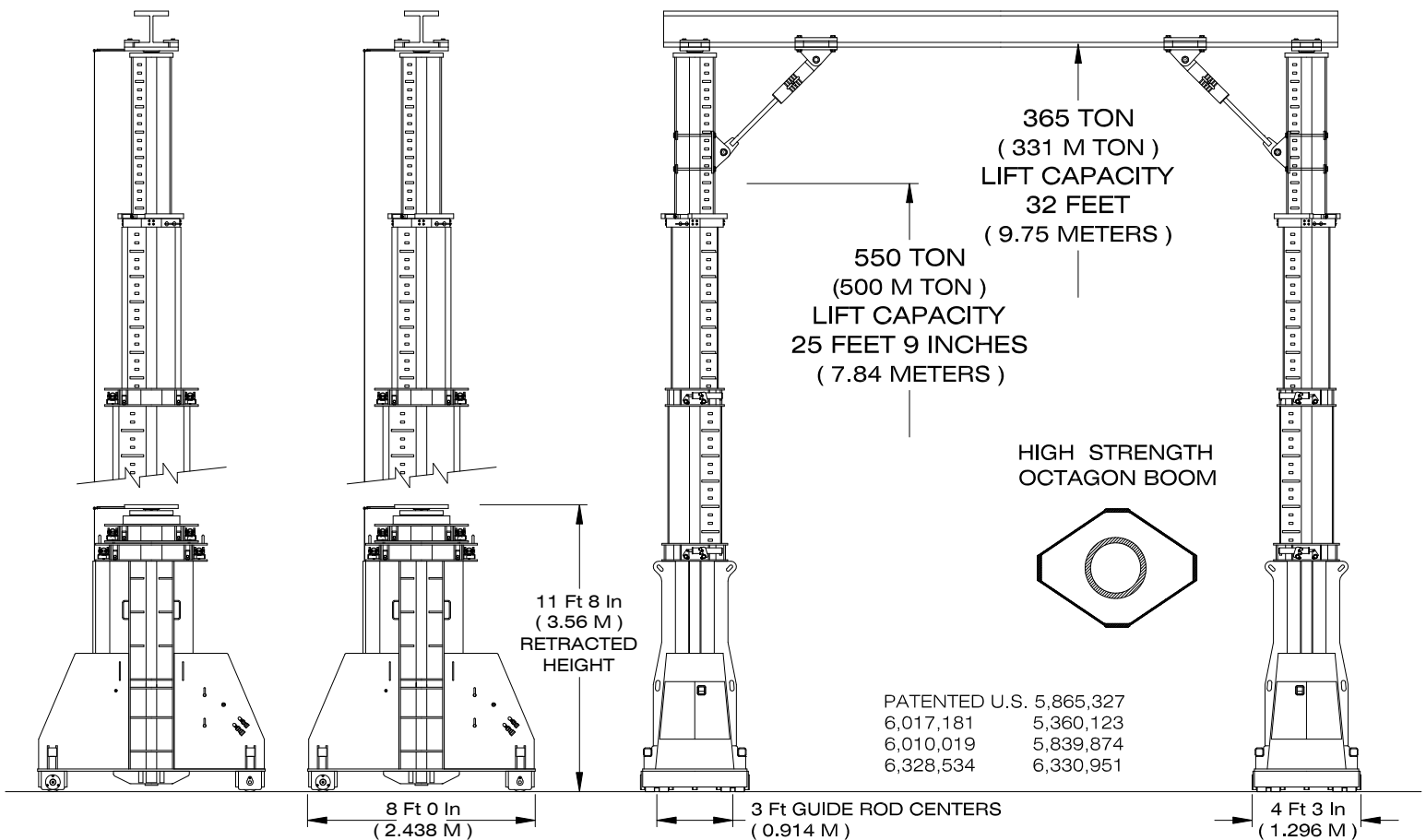


# 1100 SERIES



## TELESCOPIC OCTAGON BOOM GANTRY

### MODEL T1102-4-32 FOUR LIFT HOUSINGS

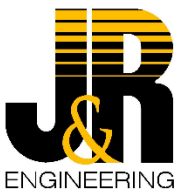


#### STANDARD EQUIPMENT

- \*Independent Control Module
- \*Automatic Cam Lock System
- \*Power Up and Down Cylinders
- \*Integral Lift Cylinder Lock Valves
- \*Telescopic Octagon Booms
- \*Two Speed Extension System
- \*Oscillating / Rotating Header Plates
- \*Pressure Compensated Piston Pump
- \*Continuous Planetary Self Propel
- \*Diesel, Propane or Electric Power
- \*Synchronized Proportional Control
- \*Full Power Manual Boom Sections

#### OPTIONAL EQUIPMENT

- \*Lifting Links
- \*Stabilizer Bars
- \*Propel Track / Lift Beams
- \*Bolt On Boom Extensions
- \*Digital Height Indicator System
- \*Self Propelled Beam Powerlinks



J & R Engineering Company, Inc.

538 Oakland Avenue  
P.O. Box 447  
Mukwonago, WI 53149 U.S.A.

262-363-9660  
800-466-RSVP  
FAX 262-363-9620  
E-MAIL / info@jrengco.com

SPECIALIZED LIFTING AND TRANSPORTATION EQUIPMENT