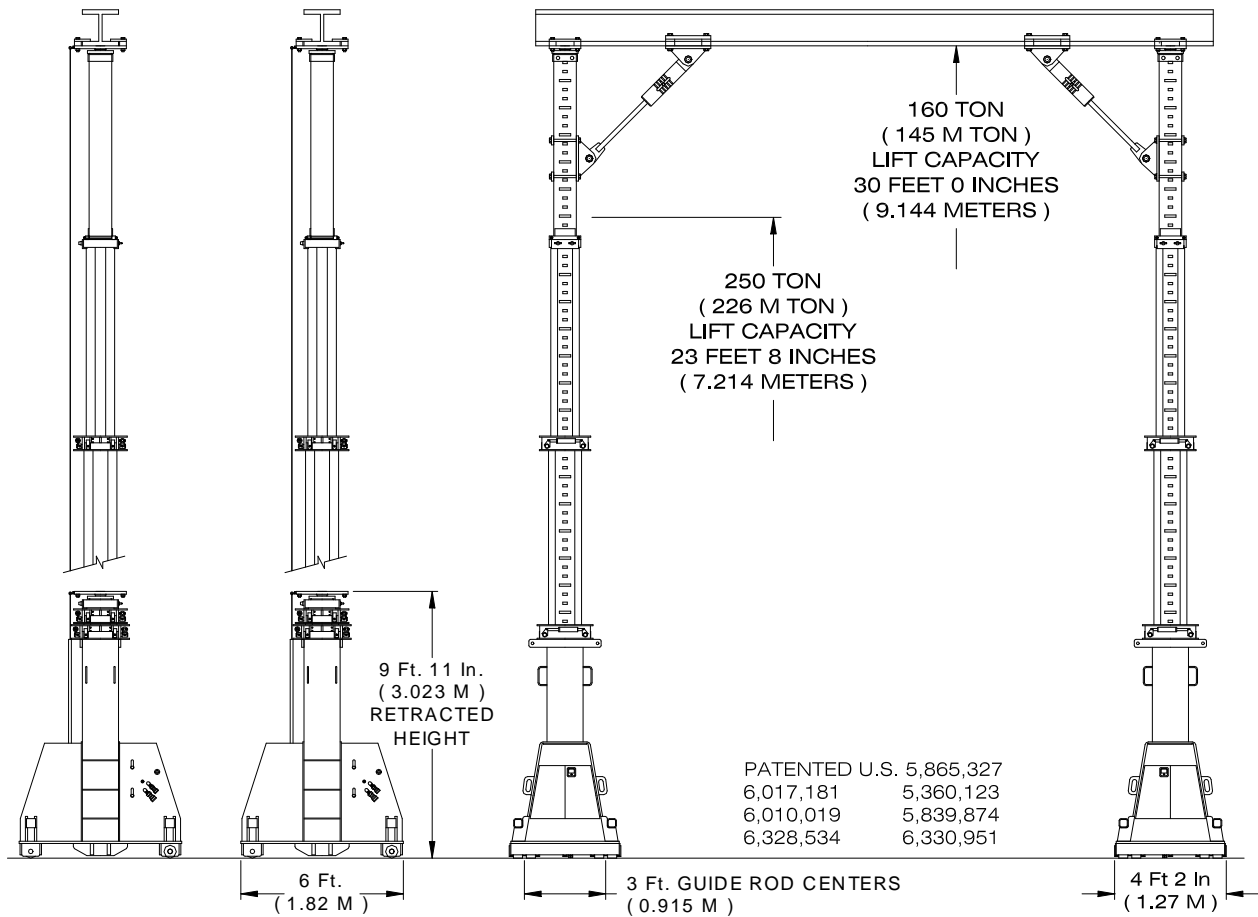


500 SERIES



TELESCOPIC BOOM GANTRY

MODEL L502-4-30 FOUR LIFT HOUSINGS



STANDARD EQUIPMENT

- *Independent Control Module
- *Automatic Cam Lock System
- *Power Up and Down Cylinders
- *Integral Lift Cylinder Lock Valves

- *High-strength Telescopic Booms
- *Two Speed Extension System
- *Oscillating / Rotating Header Plates
- *Pressure Compensated Piston Pump

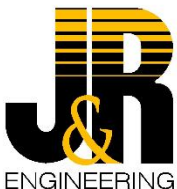
- *Continuous Planetary Self Propel
- *Diesel, Propane or Electric Power
- *Synchronized Proportional Control
- *Full Power Manual Boom Sections

OPTIONAL EQUIPMENT

- *Lifting Links
- *Stabilizer Bars

- *Propel Track / Lift Beams
- *Bolt On Boom Extensions

- *Digital Height Indicator System
- *Self Propelled Beam Powerlinks



J & R Engineering Company, Inc.

538 Oakland Avenue
P.O. Box 447
Mukwonago, WI 53149 U.S.A.

262-363-9660
800-466-RSVP
FAX 262-363-9620
E-MAIL / info@jrengco.com

SPECIALIZED LIFTING AND TRANSPORTATION EQUIPMENT

