



since 1949



Member of CISQ Federation



CERTIFIED MANAGEMENT SYSTEM
ISO 9001

100 iE

indoor ELECTRIC

TECHNICAL FEATURES

Frame Structure formed by one box-type member only, for the complete frame width, with side parts at T shape in order to obtain the maximum bending and torsional stiffness. It is connected by means of crosspieces in the front and rear part corresponding to the axles location.

Projected and manufactured by ORMIG from high quality steel.

Driving motor Electric motors at AC, 30 kW power each, 96V.

Electronic control, which allows for the steering on the crane axle.

Axles Rigid driving front axle, formed by two independent wheels units with electronic differential gear.

Steering rear axle, sideway double wheels, steering angle to 98° allowing the steering on the central axle. Each wheel unit is connected to the frame by means of two-rows balls bearing, in the upper position of the wheel. Air-hydraulic spring system providing springing, oscillation and locking with electronic control.

Tyres 4 cushion twin wheels 40 20 30 on front axle and 2 + 2 super-elastic tyres 355/50-20/10.0 at rear axle.

Brakes In compliance with EEC regulations. Service brake at hydraulic control acting at front and rear wheels, with power-assisted pedal control.

Mechanical parking brake, spring-type acting in the front wheels by means of electric selector control.

Cab Steel structure. Wide visibility for the operator is provided.

It is complete with rearview mirrors, instrumentation, windshield-wipers, adjustable ergonomic seat.

The various movements are controlled by levers equipped with electric device against unexpected operations.

Electric system 96 V c.c. by means of lead accumulator; 1395 Ah capacity (about 8 hours operation) with 48 elements. 24 V. c.c. lighting through 96/24V converter. Separated battery charge.

Boom Fabricated from plate at high strength. It is connected to the frame by means of rear supporting arms. Telescopic boom with a base section and two extensions at independent hydraulic extraction control. Extensions extraction by means of two double acting cylinders.

Derricking is provided through one double action cylinder.

Hydraulic system Fed by a variable delivery pump connected to the electric motor; for derricking, boom extraction or winch. Electric motor at A.C., 34 Kw power; operating control by means of electronic unit.

Hydraulic oil tank capacity 390 liters.

Electronic unit Power control: by means of three separated electronic station, one for reach electric motor; in interface position. MOSFET technology with starting self-diagnostic check and operations survey for prompt indications on the dashboard of eventual problems and type.

Should the breakdown be of danger for the operator or for the vehicle, the corresponding motion is cut out.

Each electronic station keeps in storage all eventual failures occurred during the complete crane life

Crane control: by means of two electronic station which control all the crane functions and information for the operator through display at high resolution.

Safe load device Electronic - active type - with locking of the operations, which can cause dangerous conditions.

Safety regulations The crane is equipped with all safety devices as per regulations in force. It complies with the requirements of Directive 2006/42/CE "Machine Directive" and to the EN 13000. Structure according to regulation EN 13001. Declaration of conformity "CE" is provided.

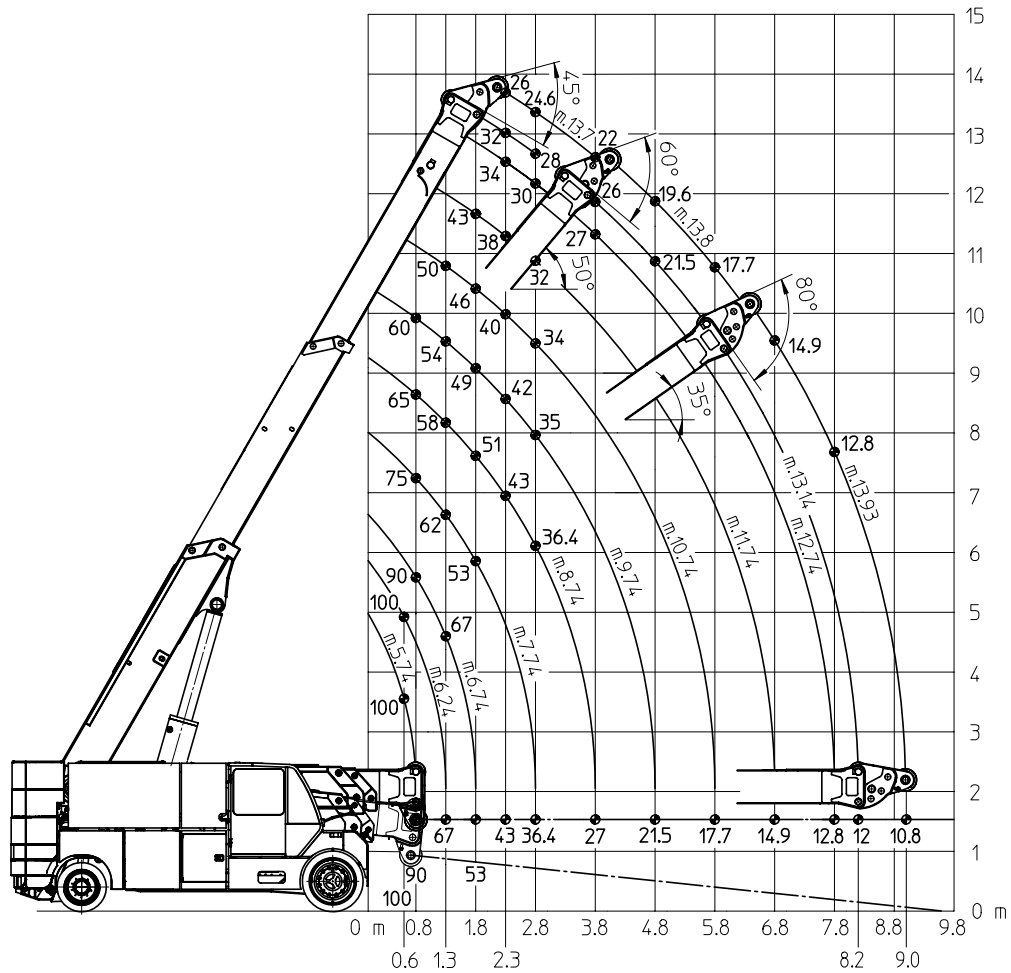
Weights Standard crane

total weight:	26.500 Kg
front axle:	approx. 12.400 Kg
rear axle:	approx. 14.100 Kg

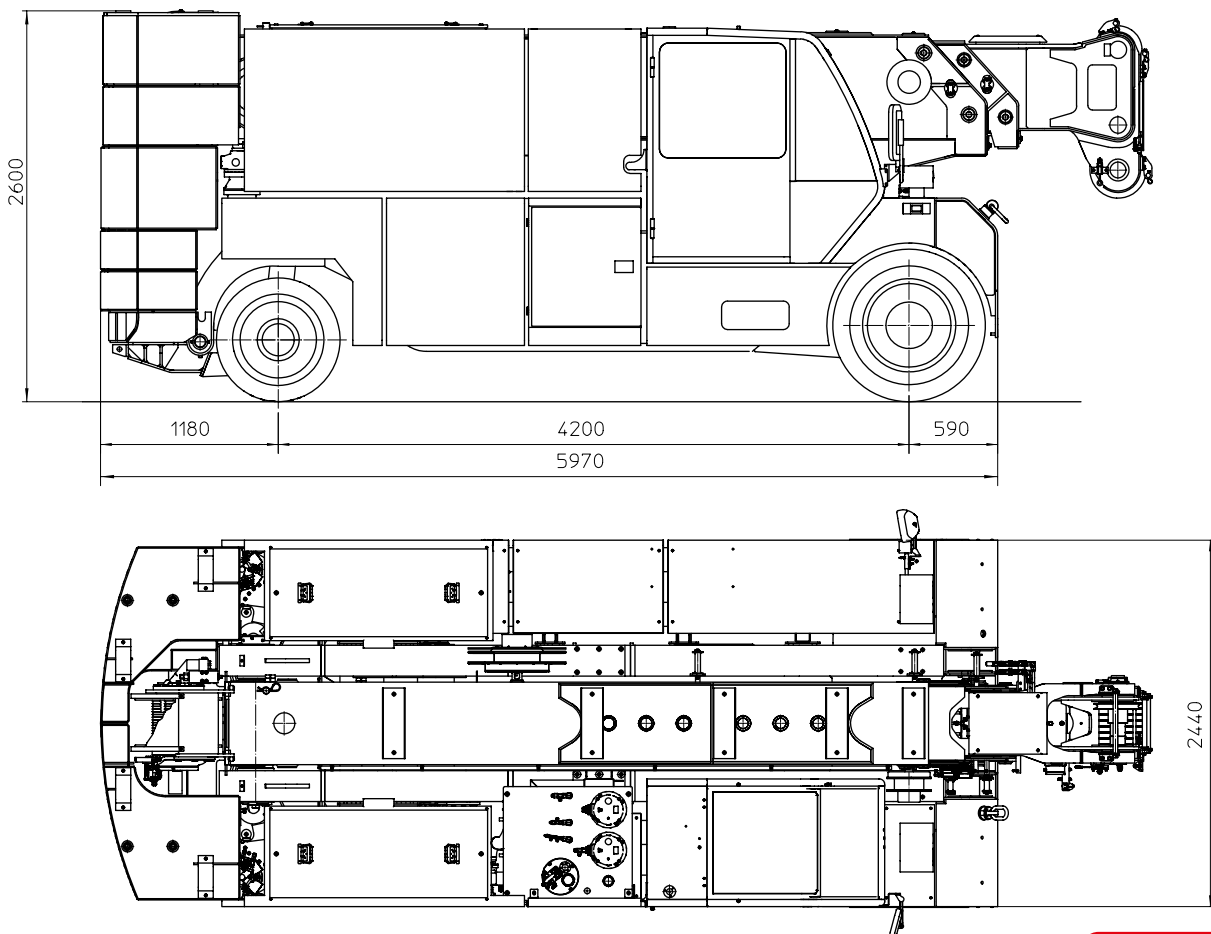
Crane with counterweights

total weight:	approx. 48.200 Kg
front axle:	approx. 8.500 Kg
rear axle:	approx. 39.700 Kg

Din 15019.2 Lifting capacity chart (tonnes)



General Dimensions



TEL. (+39) 0143 80051
FAX (+39) 0143 86568
E-mail: mktg@ormigspa.com
E-mail: sales@ormigspa.com
www.ormig.com

ORMIG S.p.A.
PIAZZALE ORMIG
15076 OVADA (AL)
ITALY



The history of the lifting from 1949