



Since 1949

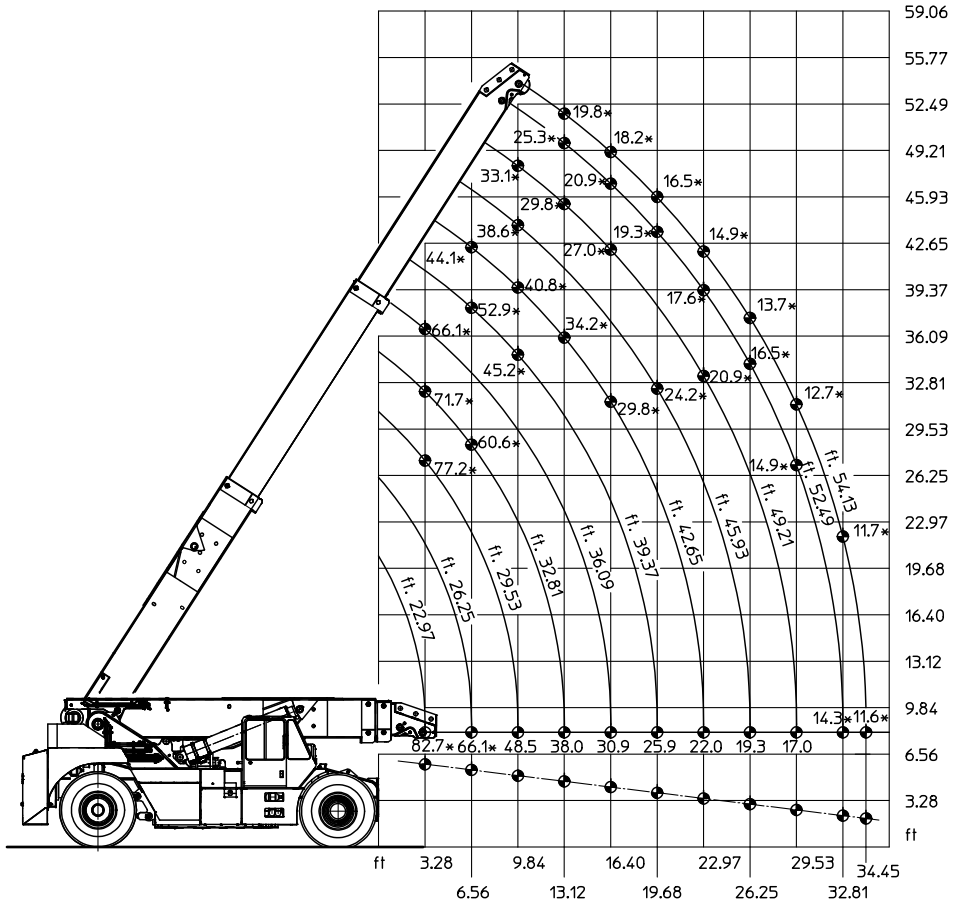


75 tm

TECHNICAL FEATURES

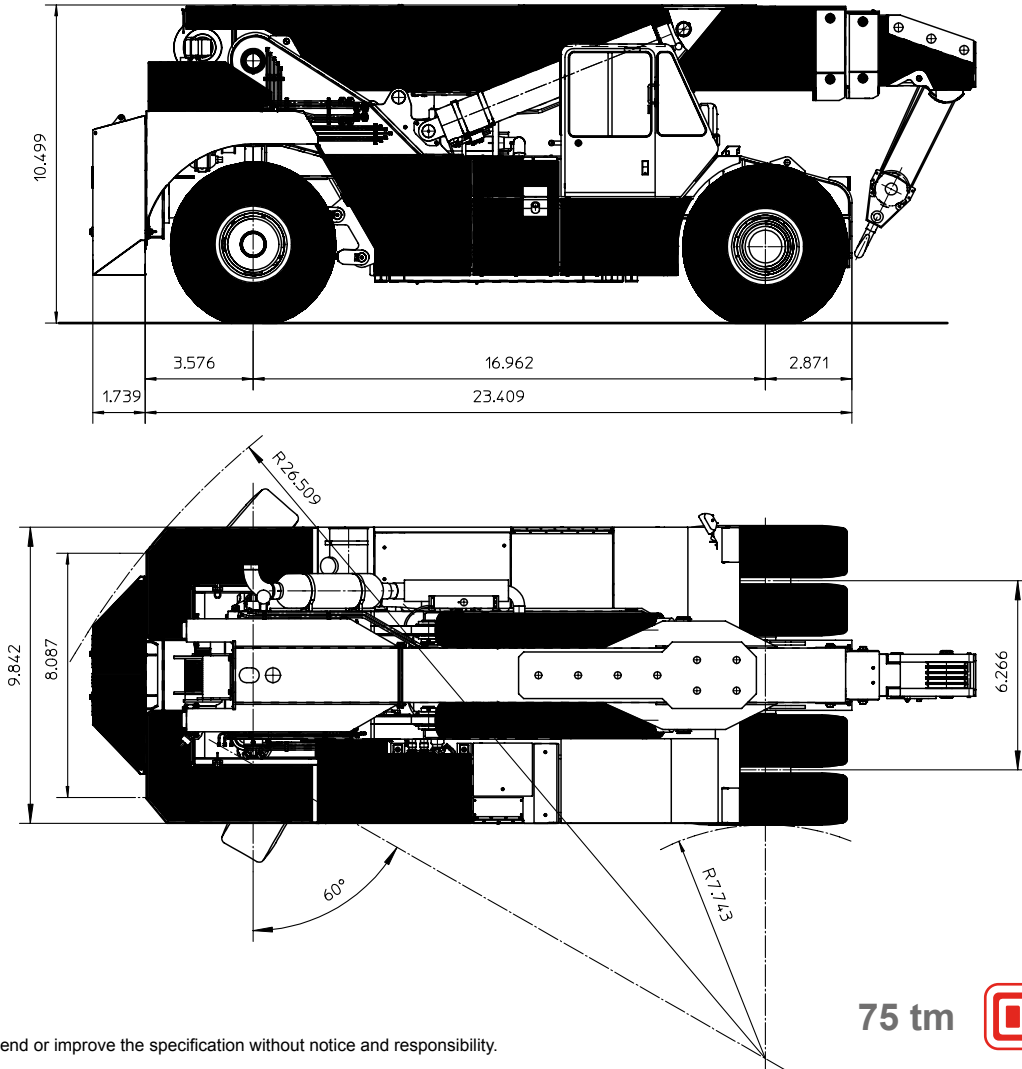
Carrier	4 x 2 x 2	Hydraulic system	Fed by a variable delivery pump with electro-proportional distributor; compensated, anti-saturated. Electronic keysender with four proportional operations. Hydraulic oil tank capacity 510 litres.
Frame	Monolithic structure formed by two frame side members connected in the front and rear part in the position of the front axle and of the rear gantry location.	Safe load device	Electronic - active type - with locking of the operations which can cause dangerous conditions when reaching the max crane capacity.
Engine	Mercedes OM 926 LA, power 240 kW (325HP) at 2200 rpm, exhaust as per Directive 97/68/CE III A, electronic control. Water cooling. Fuel tank capacity 300 litres.	Safety regulations	The crane is equipped with all safety devices as per regulations in force. It complies with the requirements of Directive 2006/42/CE "Machine Directive" and to the EN 13000. Structure according to regulations EN 13001. Declaration of Conformity CE.
Speed gearbox	Transmission with ZF torque converter, 4 forward and 3 reverse speeds. By hand or automatic control. Max speed about 25 Km/h.	Road certification	The crane can be certified for road travelling.
Axles	Driving front axle with differential-gear. Rigid suspension. Steering rear idle axle with lockable pneumo-hydraulic suspension.	Weight	Total weight 36.000 Kg - Front axle 18.000 Kg - Rear axle 18.000 Kg
Tyres	Twin tyres in the front axle and single tyres in the rear axle, type 18.00-R-25.	Equipment on request	<ul style="list-style-type: none">• Auxiliary counterweight• Various lengths special fly-jibs• Fix hook at boom top• Self-levelling forks complete with sideshift device for containers and marbles blocs handling• Spare wheel• Special jaws for various performances
Steering	Hydraulic steering with Danfoss hydraulic drive.		
Brakes	In compliance with EEC regulations for road travel, at hydraulic control. Multiple discs at oil bath in the front axle; dry disc at rear axle. Two independent circuits. Mechanical parking brake, spring-type acting in the transmission at front axle input.		
Cab	Steel structure, right side. Wide visibility for the operator is provided. It is complete with rearview mirrors, instrumentation, windshield wipers, heater, adjustable anatomical seat. The various movements are controlled by levers equipped with electric device against unexpected operations.		
Electric system	24 v - 800 W alternator, 2 batteries of 12 V 180 Ah Control of the load capacity, suspension and speed according to the lifted load by means of electronic system connected with CAN-BUS connection.		
Boom	Fabricated from box-type plate at high strength. It is connected to the frame by means of rear gantry. Telescopic boom with a base section and two extensions at independent hydraulic extraction control. Extensions extraction by means of two double acting cylinders. Derricking is provided through two double acting cylinders.		
Winch	Oleodynamic with automatic brake. Adjustable speed from 0 to 50 m/min. with 6000 daN capacity at 5th layer single rope. Max rope length 131 m dia. 18 anti-rev. Type A7 ALC		

Din 15019.2 Lifting capacity chart (tonnes)



* Capacities determined by factors other than tipping load

General Dimensions



It's ORMIG right to amend or improve the specification without notice and responsibility.



TEL. (+39) 0143 80051
 FAX (+39) 0143 86568
 E-mail: mktg@ormigspa.com
 E-mail: sales@ormigspa.com
www.ormig.com - www.pickandcarry.com

ORMIG S.p.A.
 PIAZZALE ORMIG
 15076 OVADA (AL)
 ITALY



The history of the lifting from 1949